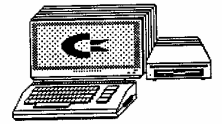


SOUTHERN DISTRICTS COMPUTER USERS CLUB INC.



August 2009



Club Web Site <http://videocam.net.au/sdcuci/indexhtml>

Editor Jim Greenfield

MEETINGS are held on
the third Wednesday of
the Month, at
Christ Church
O'Halloran Hill 1708
Main South Road
O'Halloran Hill at
7.30pm

Visitors most welcome.

Cost \$2 per person, which
includes the Newsletter
plus coffee/tea and
biscuits.

Subscriptions for twelve
months Single \$18
Family membership \$24
Novice and experienced
computer users will be
warmly welcomed

**Southern Districts
Computer Users Club
Inc.**

For further information
about S.D.C.U.C.Inc.

Contact The Club President,
Jim Greenfield 83824912

Correspondence to
The Secretary
S.D.C.U.C.I.

Box 991
Morphett Vale 5162
Email to

ronald.stephens1@three.com.au



Marg Buckle	9 th August
Pat Vice	11 th August
Colin Wright	18 th August
Pearl Vice	23 rd August
Dean Vice	23 rd August

The President's Page

Firewalls, anti-virus programs and anti-spyware programs;

I am often asked, Can I have more than one of each of these programs installed in my computer? For example, I run ZoneAlarm; does that mean should I turn off Windows firewall?

Naturally, the answer on running more than one each of those three categories is different, and varies depending on exactly what you're doing.

As a general rule of thumb, you need only one of each. It's what I do. A single, good anti-spyware solution, an anti-virus solution, and a single firewall and, in my opinion, you're good to go.

However, no single anti-virus or anti-spyware program will catch all viruses or spyware. So there is a case to be made for having more than one. But if you do, you need to be careful because they can, and often do, interfere with each other.

Most anti-virus programs operate in two modes:

Scan: the utility examines memory and files on disk for traces of malware. This involves actually examining the contents each file for things that "look like" viruses.

Monitor: often referred to as "real time" monitor, the anti virus program is continually running and scans files as they are downloaded to your machine, notifying you nearly immediately if the file you just received contains something that looks like a virus.

There's nothing at all wrong periodically running an anti-virus *scan* with more than one anti-virus program. The key here is that it's just a scan - it starts, it scans, and then it's done. There's no opportunity to come in to conflict with another anti-virus program.

Real time monitoring, on the other hand, is another story. When you install most anti-virus programs they often automatically install and enable their real-time monitors. Running two or more real-time anti-virus monitors at the same time is very likely to cause a conflict. That conflict could result in error messages, crashes of the anti-virus programs, or other types of failure.

So it's certainly OK to have more than one anti-virus program *installed*, and it can make sense to run a *scan* using a different program from time to time, but you must make sure **you only have one real-time monitor enabled at a time.**

"Running two or more real-time anti-virus monitors at the same time is very likely to cause a conflict."

The simplest way is to rely on a single, good anti-virus program and make sure that its database of known viruses is continually being updated.

Jim Greenfield

President

A married man should forget his mistakes. There's no use in two people remembering the same thing!

DON'T CHEAT BY SCROLLING DOWN FIRST!

It takes less than a minute.

Work this out as you read.

This is not one of those waste of time things -- it's fun.

1. First of all, pick the number of times a week that you would like to have chocolate (more than once but less than 10)
2. Multiply this number by 2 (just to be bold)
3. Add 5
4. Multiply it by 50 — I'll wait while you get the calculator!
5. If you have already had your birthday this year add 1759 ...
If you haven't, add 1758.
6. Now subtract the four digit year that you were born.

You should have a three digit number

The first digit of this was your original number (i.e., how many times you want to have chocolate each week).

The next two numbers are your age

Opinions expressed in this newsletter do not necessarily represent those of the Southern Districts Computer Users Club Inc. nor does publication of an advertisement imply endorsement by the Southern Districts Computer Users Club Inc.

While every attempt has been made to verify that the information in this newsletter is correct, the Southern Districts Computer Users Club Inc accept no responsibility for any inaccuracies.

Likewise no member of the committee or member of the Southern Districts Computer Users Club will accept any liability for any damage occurring to a computer, to any computer system and/or data from following instructions given in this newsletter.

Let *Evacom* Fix it Professionally

Minimum charge applies

**FOR UP MARKET & UPGRADEABLE
COMPUTERS,
PROFESSIONAL REPAIRS AND UP-GRADES
AT SENSIBLE PRICES**

!! Go To !!

Evacom **YOUR LOCAL COMPUTER SHOP**

"WE ARE A GROWING FAMILY BUSINESS, LOCAL AND PROUD OF IT"

**Shop 4, Woodcroft Market Plaza
217 Pimpala Road, Woodcroft
PH: 8322 3390 or Fax: 8322 2109
E-Mail: sales@evacom.com.au**



Have you recently acquired, or do you just want to learn more about operating, your computer?

The Club conducts classes on a wide range of subjects, at a very moderate charge.

The maximum number in class is five.

(Our aim is to conduct the classes in a friendly non-threatening atmosphere)

Some of the classes that are available:-

1. Basic Computing (Stage One and / or Stage Two)
2. Advanced Word
3. Internet workshops
4. Digital Cameras

For more information contact a committee member.

Mouse Maintenance

I don't know how they wrote this with a straight face.

This apparently was a real memo sent by a computer company to its employees in all seriousness...

This memo is from an unnamed computer company. It went to all field engineers about a computer peripheral problem. The author of this memo was quite serious. The engineers rolled on the floor!

Mouse balls are now available as a FRU (Field Replacement Unit.) Therefore, if a mouse fails to operate or should it perform erratically, it may need a ball replacement. Because of the delicate nature of this procedure, replacement of mouse balls should only be attempted by properly trained personnel.

Before proceeding, determine the type of mouse balls by examining the underside of the mouse.

Domestic balls will be larger and harder than foreign balls.

Ball removal procedures differ depending upon the manufacture of the mouse. Foreign balls can be replaced using the pop-off method. Domestic balls are replaced by using the twist-off method

Dynamic Mechanics

Automotive Repairs


ALL GENERAL MECHANICAL REPAIRS

Brakes, Suspension, Clutch,
Auto Trans Service,
Wheel Balance & Repairs,
New & S/Hand Tyres.

SERVICE, TUNE & SAFETY CHECK
(most 4 & 6 cyl. cars) - Includes plugs,
points, oil, filter.

**Pensioner
& Seniors
Discount**

U4/2 Somerset Circuit
Lonsdale S.A. 5160

 8186 0081

MEETING RULES

NO SMOKING NO DRINKING NO SWEARING

We are allowed to use the facilities at Christ Church, O'Halloran Hill in return of a small fee plus respect for their property. We ask for your co-operation in respect to the above. While we can not control what our members do away from our club meetings, Piracy of copyright material can not be condoned at our meetings.

NEVER KNEW THIS BEFORE

I wonder how many people know about this?

A 36-year-old female had an accident several weeks ago and totalled her car. A resident of Wollongong, NSW, she was travelling between Wollongong & Sydney. It was raining, though not excessively, when her car suddenly began to hydroplane and literally flew through the air.

She was not seriously injured but very stunned at the sudden occurrence!

When she explained to the policeman what had happened, he told her something that every driver should know -

NEVER DRIVE IN THE RAIN WITH YOUR CRUISE CONTROL ON

She had thought she was being cautious by setting the cruise control and maintaining a safe consistent speed in the rain. But the policeman told her that if the cruise control is on and your car begins to hydroplane -- when your tyres lose contact with the pavement, your car will accelerate to a higher rate of speed and you take off like an airplane. She told the policeman that was exactly what had occurred.

The policeman estimated her car was actually travelling through the air at 10 to 15 kms per hour faster than the speed set on the cruise control.

The policeman said this warning should be listed, on the driver's seat sun-visor -

NEVER USE THE CRUISE CONTROL WHEN THE PAVEMENT IS WET OR ICY, along with the airbag warning. We tell our teenagers to set the cruise control and drive a safe speed - but we don't tell them to use the cruise control only when the road is dry.

The only person the accident victim found, who knew this (besides the policeman), was a man who had had a similar accident, totaled his car and sustained severe injuries. If you send this to 15 people and only one of them doesn't know about this, then it was all worth it. You might have saved a life.



How to assign, to change, or to remove drive letters on a drive, a partition, or a volume by using the Disk Management snap-in in Microsoft Windows XP.

The Disk Management snap-in is an administrative tool for managing hard disks and the volumes or partitions that they contain. Use the Disk Management snap-in when you want to add, to change, or to remove drive letters on drives, on partitions, or on volumes on your computer's hard disks, CD-ROM drives, and other removable media devices.

Your computer can use up to 26 drive letters, from A through Z. Use drive letters C through Z for hard disk drives. Drive letters A and B are reserved for floppy disk drives. However, if your computer does not have a floppy disk drive, you can assign these letters to removable drives.

Before you modify drive-letter assignments, note the following items:

Changing the drive letter of the system volume or the boot volume is not a built-in feature of the Disk Management snap-in.

Many MS-DOS-based and Microsoft Windows-based programs refer to specific drive letters for environmental or other variables. If you modify the drive letter, these programs may not function correctly.

How to assign a drive letter

To assign a drive letter to a drive, a partition, or a volume, follow these steps:

Log on as Administrator or as a member of the Administrators group.

Click Start, click Control Panel, and then click Performance and Maintenance.

Note If you do not see Performance and Maintenance, go to step 3. Performance and Maintenance appears in Control Panel only if you use Category view. If you use Classic view, Performance and Maintenance does not appear.

Click Administrative Tools, double-click Computer Management, and then click Disk Management in the left pane.

Right-click the drive, the partition, the logical drive, or the volume that you want to assign a drive letter to, and then click Change Drive Letter and Paths.

Click Add.

Click Assign the following drive letter if it is not already selected, and then either accept the default drive letter or click the drive letter that you want to use.

Click OK.

The drive letter is assigned to the drive, to the partition, or to the volume that you specified, and then that drive letter appears in the appropriate drive, partition, or volume in the Disk Management tool.

How to change a drive letter

To change an existing drive letter on a drive, on a partition, or on a volume, follow these steps:

Log on as Administrator or as a member of the Administrators group.

Click Start, click Control Panel, and then click Performance and Maintenance.

Click Administrative Tools, double-click Computer Management, and then click Disk Management in the left pane.

Right-click the drive, the partition, the logical drive, or the volume that you want to assign a drive letter to, and then click Change Drive Letter and Paths.

Click Change.

Click Assign the following drive letter if it is not already selected, click the drive letter that you want to use, and then click OK.

Click Yes when you are prompted to confirm the drive letter change.

The drive letter of the drive, the partition, or the volume that you specified is changed, and the new drive letter appears in the appropriate drive, partition, or volume in the Disk Management tool.

The Origin of Father's Day

The idea of Father's Day was conceived by Sonora Dodd of Spokane, Wash., while she listened to a Mother's Day sermon in 1909, according to the U.S. Census Bureau. Dodd wanted a special day to honor her father, William Smart, a widowed Civil War veteran who was left to raise his six children on a farm.

A day in June was chosen for the first Father's Day celebration—June 19, 1910, proclaimed by Spokane's mayor because it was the month of William Smart's birth.

The first presidential proclamation honoring fathers was issued in 1966 when President Lyndon Johnson designated the third Sunday in June as Father's Day. Father's Day has been celebrated annually since 1972 when President Richard Nixon signed the public law that made it permanent.

What is a computer Program

Program

PROGRAM (*pro'-gram*)

[n] A magic spell cast over a computer allowing it to turn one's input into error messages.

[v] To engage in a pastime similar to banging one's head against a wall, but with fewer opportunities for reward.



MSCONFIG

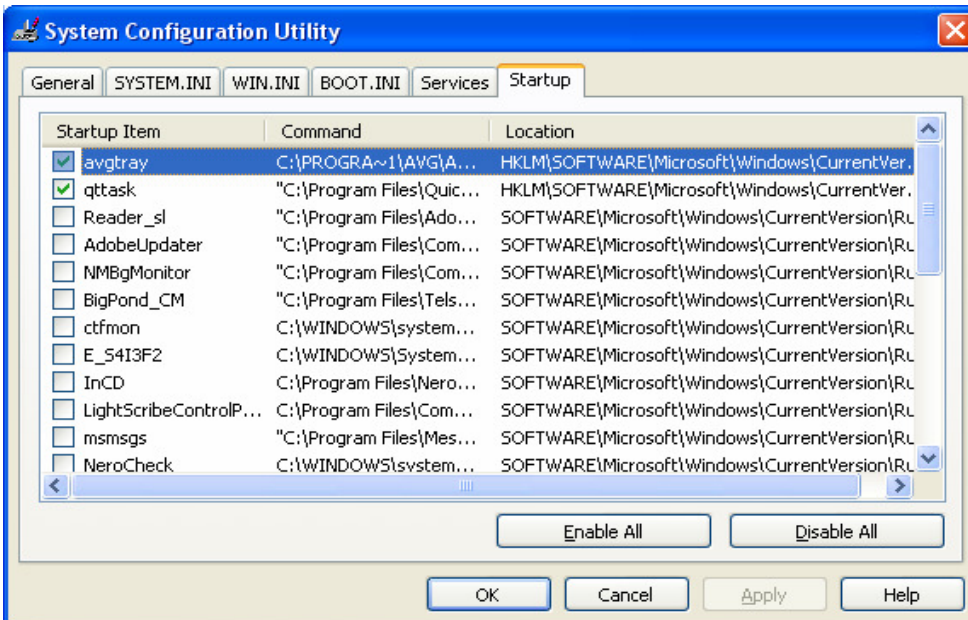
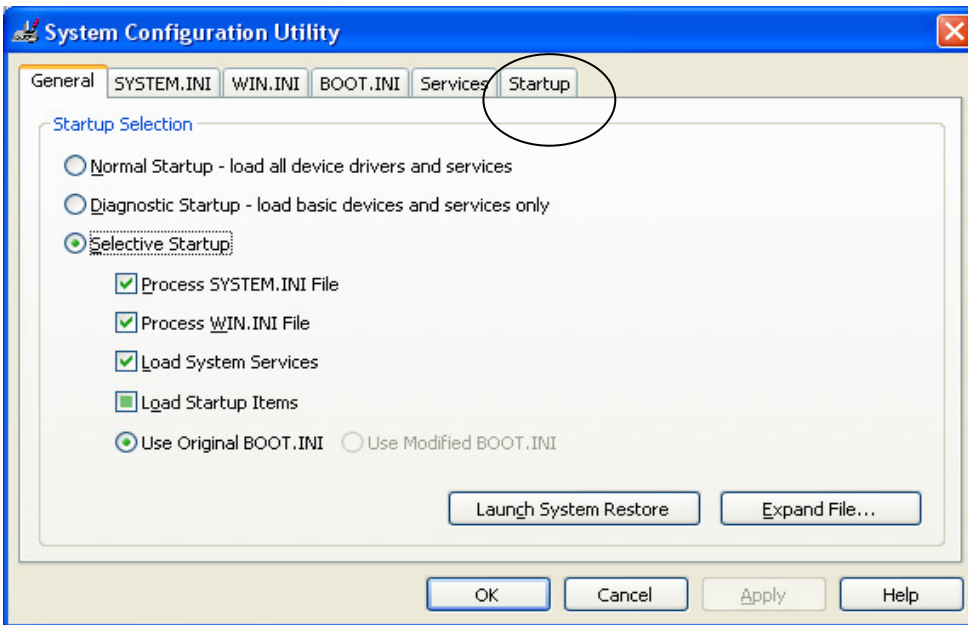
MSCONFIG is a utility found in most Windows OS which allows you to control the startup programs on your computer. By removing unnecessary programs from the Windows startup you can make your computer boot up and run much faster. It is also a good way to stop those nagging popup spyware that might running on your computer (in some cases you will need a anti spyware to remove them).

How to use MSCONFIG

click on Run and type in *msconfig*

3) This will bring up the MSCONFIG window. Click on the *Start* Tab.

4) You should see a list of programs that are set to run on startup.



Personally I remove all unwanted startup items like, Adobe Reader, IM messengers, etc. By having only needed items running on your computer, it will make it much faster. Even if items aren't checked in the list you can still start them as wanted. It does not affect the programs, just makes it load later when required.

5) Uncheck the boxes for programs which you do not want to run.

7) If still unsure check this list <http://www.sysinfo.org/startuplist.php>. It contains a list of 17654 startup items.

8) Once you are done, click the *Ok* button and choose *Restart*.

