

SOUTHERN DISTRICTS COMPUTER USERS CLUB INC.

JUNE 2011

Club Web Site <http://sdcuci.com/>

Editor Jim Greenfield

**MEETINGS are held on
the third Wednesday of
the Month, in the Hall at
the rear of
St Mary's Catholic
Church**

**Morphett Vale.
(Corner Bains Road and
Main South Road)
Visitors most welcome.**

Cost \$2 per person, which
includes the Newsletter,
plus coffee/tea and
biscuits.

Subscriptions for twelve
months Single \$18

Family membership \$24

Novice and experienced
computer users will be
warmly welcomed

Southern Districts Computer Users Club Inc.

For further information
about S.D.C.U.C. Inc.

Contact The Club President,
Jim Greenfield 83824912
Or

The Secretary
Correspondence to
The Secretary
S.D.C.U.C.I.

Box 991
Morphett Vale 5162

Email to
secretary@sdcuci.com

Grant Development

Over the last year or so, we have been endeavoring to search for ways to enhance our general club performance; our profile, our membership and to be of greater use to the community.

One way we saw of doing this was to re-introduce our basic computer classes to club members as well as the larger community. This has been done, but life would be *MUCH* easier if the computers we use could be laptops rather than the desktops currently in use.

Secondly, and as you are probably aware, between our monthly meetings, we undertake significant training, teaching, and maintenance of computers to people both within and external to our club. This is often done at the homes of the people seeking assistance.

The committee saw an opportunity to enhance both these parameters by applying for grants. It was hoped that grant money could purchase several laptop computers for the club, thus providing additional resources for the club's class and learning capabilities as well as making it easier for the Club to assist people with computer problems in their homes.

Over time, we have applied for several grants on this basis – but have been knocked back.

**But on 7th June we were notified that an application for a grant
that we had placed with
the South Australian Government, Department of Families and
Communities
had been accepted!
The grant is for \$3,428.**

We have now sent back all the forms that needed to be filled in and await the release of this money to enable us to purchase the laptops.

So for now, the committee is deliberating on the style, model and type of laptops to purchase, . but until the grant money actually comes through- nothing further can be done.

I take this opportunity to thank our Secretary, Trevor Francis, for the effort he has put in securing this grant. His dedication to detail in filling out the many official forms has been a contributing factor to our success.

Jim Greenfield

President

Dynamic Mechanics

Automotive Repairs

ALL GENERAL MECHANICAL REPAIRS

Brakes, Suspension, Clutch,

Auto Trans Service,


Wheel Balance & Repairs,

New & S/Hand Tyres.

**Pensioner
& Seniors
Discount**

SERVICE, TUNE & SAFETY CHECK
(most 4 & 6 cyl. cars) - Includes plugs,
points, oil, filter.

U4/2 Somerset Circuit
Lonsdale S.A. 5160

 8186 0081

**Have you recently acquired,
or do you just want to learn
more about operating your
computer?**

The Club conducts classes on a wide
range of subjects, at a very moderate
charge.

The maximum number in class is five.

(Our aim is to conduct the classes in a
friendly non-threatening atmosphere).

Some of the classes that are available:-

1. Basic Computing (Stage One and /
or Stage Two).
2. Advanced Word.
3. Internet workshops.
4. Digital Cameras.

**For more information
contact a committee
member.**

MEETING RULES

We are allowed to use the facilities at Hall at the rear of St Mary's Catholic Church Morphett Vale. (Corner Bains Road and Main South Road) in return of a small fee plus respect for their property. We ask for your co-operation in respect to the above. While we can not control what our members do away from our club meetings, Piracy of copyright material can not be condoned at our meetings.

WORD 2007 SHORT CUTS

- To format a word without selecting it, click the word and apply the formatting that you want. For example, press CTRL+B to apply bold formatting.
- To select a word, double-click it.
- To select a sentence, press CTRL and click in the sentence.
- To select a paragraph, triple-click in the paragraph.
- To select an entire document, press CTRL+A.
- To paste only text and not formatting, paste the text, click **Paste Options**, and then select **Keep Text Only**.
- To center, left-align, or right-align a selected paragraph, press CTRL+E, CTRL+L, or CTRL+R.
- To create a line, press the hyphen key three or more times, and then press ENTER. To create a thicker line, hold the SHIFT key down and press the hyphen key three or more times, and then press ENTER.

VCSWEB

Established 1991

VCSWEB.COM

**HOSTING ● WEB DESIGN
DOMAIN NAMES
PROGRAMMING**

**E.COMMERCE ● ZEN CART
CONTENT MANAGEMENT SYSTEMS
WORD PRESS ● DRUPAL**

**IT SECURITY
NETWORK DESIGN & SETUP
TRAINING & TUITION
DISASTER RECOVERY PLANS
AS/NZS 4360 RISK MANAGEMENT PLANS
ASC133 NETWORK SECURITY PLANS**

Rod Gasson

Adv Dip Network Security . Cert IV Programming
Cert IV Networking - Cert IV Training & Assessment
Police Clearance # 201355

Rod Gasson 0405 632 662
Gaelyne Gasson 0422 912 583
admin@vcsweb.com

VCSWEB 90 Hillier Road Reynella SA 5161

The Widescreen Tip.

Many display sold these days are widescreen, whether you're buying a notebook computer or a monitor. While it might be great for watching DVDs, when you're trying to get work done it can sometimes feel like you're a little squeezed for vertical space.

You can set up any new computer is to dock the taskbar to the right hand side of the screen. I can understand why we don't set this by default – can you imagine the had the task bar at the bottom of the screen from the beginning of why you as a power user should have to suffer from default settings screen resolution was 800x600.

complaints from users who have Windows– but there's no reason introduced when the average

In the past, Windows did an indifferent job of supporting “side dockers” taskbar, but it felt like an afterthought – the gradients would be wrong, idiosyncrasies, and you'd feel like something of a second-class citizen. feels almost as if it was designed with vertical mode as the default – the of the screen, . The net effect is that you wind up with a much better space.

. Sure, you could move the the Start menu had a few The Windows 7 taskbar icons work well on the side proportioned working

Try it in particular, if you've got a netbook computer that has a 1024x600 immediately appreciate the extra space for browsing the Internet. For the first out of sync, but you may become an enthusiastic convert!

display, you'll day you'll feel a little



Set to “Right”

What is InPrivate Browsing?

This information applies to Windows Internet Explorer 8.

InPrivate Browsing enables you to surf the web without leaving a trail in Internet Explorer. This helps prevent anyone else who might be using your computer from seeing where you visited and what you looked at on the web. You can start InPrivate Browsing from the new tab page or the Safety button.

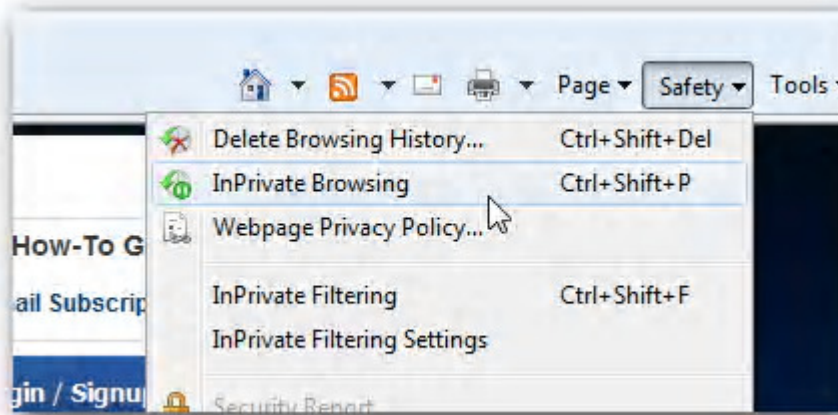
When you start InPrivate Browsing, Internet Explorer opens a new browser window. The protection that InPrivate Browsing provides is only in effect during the time that you use that window. You can open as many tabs as you want in that window, and they will all be protected by InPrivate Browsing. However, if you open another browser window, that window will not be protected by InPrivate Browsing. To end your InPrivate Browsing session, close the browser window.

While you are surfing using InPrivate Browsing, Internet Explorer stores some information—such as cookies and temporary Internet files—so that the webpages you visit will work correctly. However, at the end of your InPrivate Browsing session, this information is discarded. The following table describes which information InPrivate Browsing discards when you close the browser and how it is affected during your browsing session:

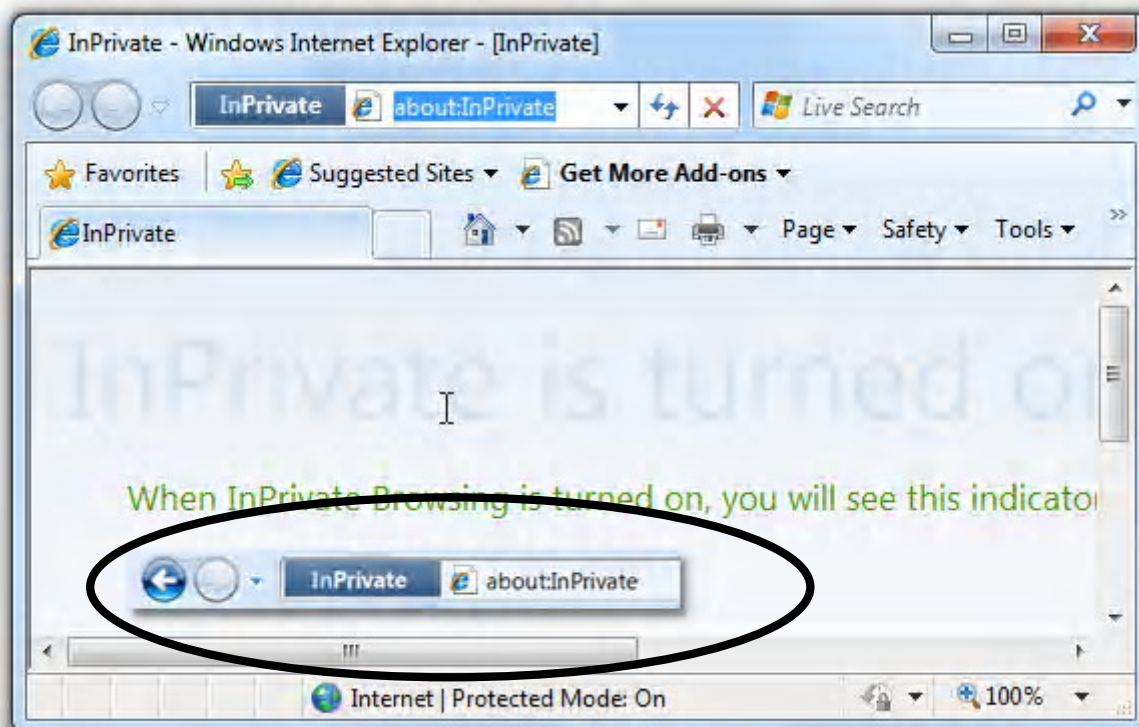
Information	How it is affected by InPrivate Browsing
Cookies	Kept in memory so pages work correctly, but cleared when you close the browser.
Temporary Internet Files	Stored on disk so pages work correctly, but deleted when you close the browser.
Webpage history	This information is not stored.
Form data and passwords	This information is not stored.
Anti-phishing cache	Temporary information is encrypted and stored so pages work correctly.
Address bar and search AutoComplete	This information is not stored.
Automatic Crash Restore (ACR)	ACR can restore when a tab crashes in a session, but if the whole window crashes, data is deleted and the window cannot be restored.
Document Object Model (DOM) storage	The DOM storage is a kind of "super cookie" web developers can use to retain information. Like regular cookies, they are not kept after the window is closed

Internet Explorer InPrivate Browsing

Internet Explorer's "**In Private browsing**" mode is an excellent way to hide what you're looking at from prying eyes, but it's normally hidden under a menu... but we can make it easier to access. To open an InPrivate Browsing window, you can either use the Ctrl+Shift+P shortcut key, or just use the Safety \ InPrivate Browsing item on the menu.



And you'll immediately see a private browsing window, which will leave no traces of your browsing history. **Useful!**



The other thing that private browsing is useful for is checking your email on somebody else's computer. There is no danger of cookies lying around letting them back into your email account once you've gone.

Windows 7 Makes it Really Simple

If you are using Windows 7, all you have to do is right-click on the icon in the taskbar and choose the **InPrivate** option. You can also click and hold the left mouse button on the icon, and slide your mouse up the menu will pop up and you can choose it there.

OUR SUBURB

Morphett Vale, South Australia -

Morphett Vale is a southern suburb of Adelaide in the City of Onkaparinga. It is the largest suburb in the state, with a population of more than 23,000 and an area of 12.76km², followed by Paralowie with nearly 10,000 fewer residents. There are approximately 1,000 businesses in Morphett Vale.

Morphett Vale was the first major town south of Adelaide. In October 1840, a town called Dublin was subdivided leading to the development of Morphett Vale.

By 1866, the town was said to have 'a large number of neat residences, many of which have fine vineyards attached'.

Morphett Vale was named after John Morphett. The town quickly boasted churches and chapels, a brewery, wind flour mill, court house and police station.

Agriculture consisted of cereal, mixed farms and vineyards. 1852 saw the formation of the Morphett Vale District council which merged with Noarlunga in 1932. During the second world war the district was a major producer of flax.

Land subdivision occurred during the 1960's, transforming the area from a rural region to a metropolitan suburb.

Here's a some interesting hotkeys for Windows 7

Ctrl+Shift+N: Creates a new folder in Windows Explorer.

Alt+P: Toggles the preview pane in Windows Explorer.

Win+(+/-): Zoom in/out.

Win+G: Cycle between the Windows Gadgets on your screen.

Win+1 Open the first program on your Quick Launch bar

Win+2 Open the second program on your Quick Launch bar

Win+n Open the *n*th program on your Quick Launch bar

Win+U Open the ease of access center

Win+F Open the search window

Win+X Open the Mobility Center

Win+E Open Explorer

Win+R Open the Run window

Win+P Open the projection menu (generally used for laptops connected to projectors)

Win+Pause Open the System Properties portion

Wykeham Buns

From Gran's schooldays [about 1911-1916]

Mix 1 breakfast cup flour with 1 breakfast cup yeast at about 3 p.m. and put in a warm place.

In evening take 2 heaped saucers flour,
1 teacup sugar and a little salt, -
1 handful currants and sultanas/raisins, -
1 soup spoon butter and 2 eggs.
Add to yeast sponge and mix with warm milk to fairly stiff dough
Cover and leave all night.

Make into buns in the morning and leave to rise again.
Bake quick oven, 10 min.

Whitewash

{Used for marking lines on tennis court or whitewashing huts}

½ sack unslaked lime (fizzy) 12 lbws coarse salt
5 lbws tallow 2 lbws yellow ochre

Put lime into a barrel, add broken up tallow, add water and stir, add salt and leave for two weeks to stand, stirring occasionally, and add more water if necessary. Add yellow ochre straining it to colour before whitewashing.

I thank Anne Leddra for this article

Fleurieu Peninsula Family History Group

*Meet regularly on the third Saturday of each month at 1.30 p.m.
(i.e.- 3 days after our own monthly meeting)*

Access available to large resource centre for research;

Access to special interest groups:

(eg English: Scottish; Irish: Brick Walls)

Visitors most welcome:

*Contact: Vanessa Catterall on catterallvg@bigpond.com
8384 7918*

*or Keith Jones kjones2011@optusnet.com.au
7288 0192*





Evacom provides the following services:

Purpose Built Up-Market Computer Systems for Home and Business

Repairs & Upgrades to Computers and Laptops

Various types of computer hardware

Acer, ASUS, Compaq, HP, Leader, Lenovo and Samsung Laptops

Computer Preventative Maintenance

Canon, Epson, HP and Brother Inks and Accessories

Internet Services and Software

Backup & Antivirus solutions

**Evacom built Computer Systems are C-Tick Compliant
as required under The Radio Communications Act**

**We provide Local After Sales Service to all our Customers and
Technical Support to all Evacom Built Computer Systems**

Contact: Helen, Mark or John

Tel: (08)83223390

Fax: (08) 8322 2109

sales@evacom.com.au

Trading Hours

Monday 9.00am to 5.30pm

Tuesday 9.00am to 5.30pm

Wednesday 9.00am to 5.30pm

Thursday 9.00am to 8.00pm

Friday 9.00am to 5.30pm

Saturday 9.00am to 4.00pm

Closed on Sunday's and Public Holiday's